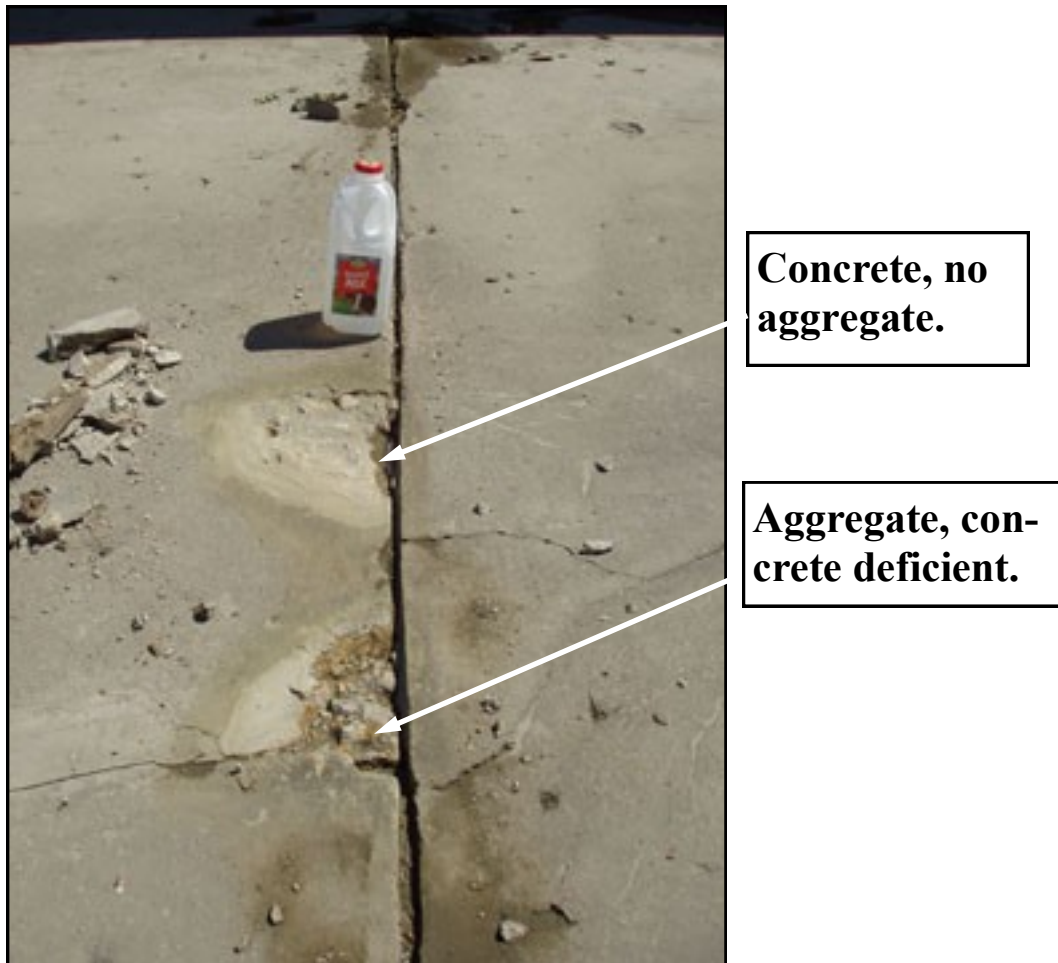


**PROJECT TO RESURFACE THE FLOOR OF
THE CONCRETE SPILLWAY
(August 2008.)**

The first two pages document the condition of the spillway prior to starting work.



Look at the two adjacent ‘holes’. The upper one appears to be all concrete, no aggregate. The lower one, slightly deeper, shows the under layer is heavy in limestone aggregate. Either the first pour was almost all aggregate, concrete deficient, or was not mixed properly. Limestone is porous, a very bad choice for this climate. The result, water penetration and ice cracking.



This crack was professionally filled, but is separating from the sides.



This five foot 'hollow' section was removed.

Willettt Hoffman & Associates prepared drawings and assisted with our contacts with IDNR. No permit was required. Four quotations were solicited. M&M were selected as the low bid at \$25,000. Several on-site meetings were conducted between representatives of M&M, Willett Hoffman & Associates and the Willow Lake Association.



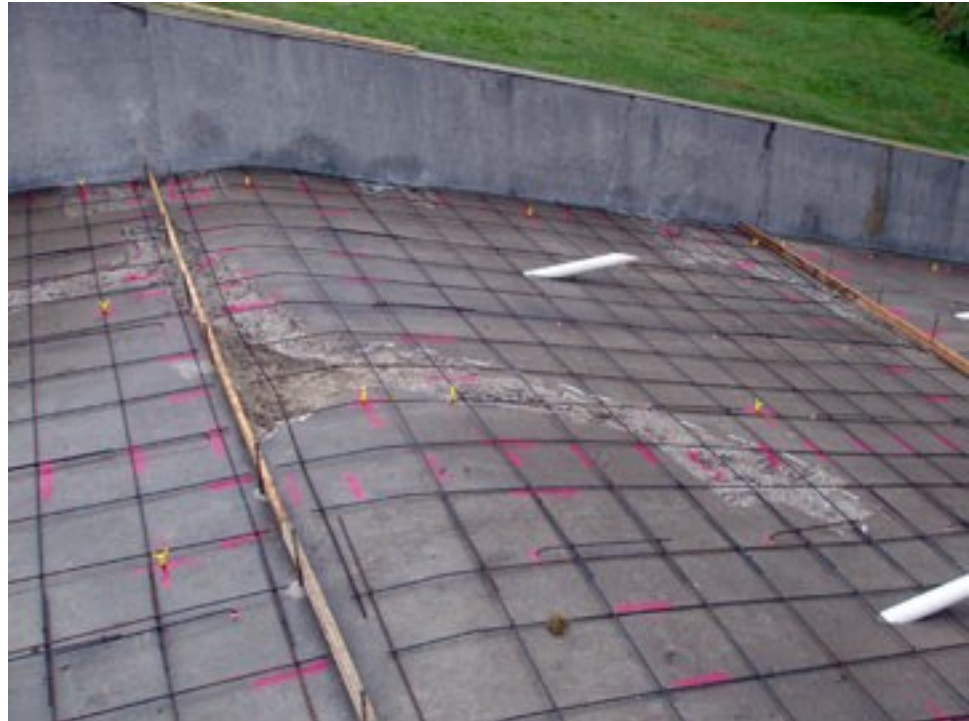
Areas of the existing dam floor were marked for removal.

**Cut out
and filled.**





The lower section was tapered into the existing energy dissipater.



The 'old' surface was sand blasted. Re-bar placed and inspected by WH&A.



**A concrete pump was used
to reach across the dam.**





First pour.



Going well.

If you want to see the finished work, please walk down and “inspect” it.